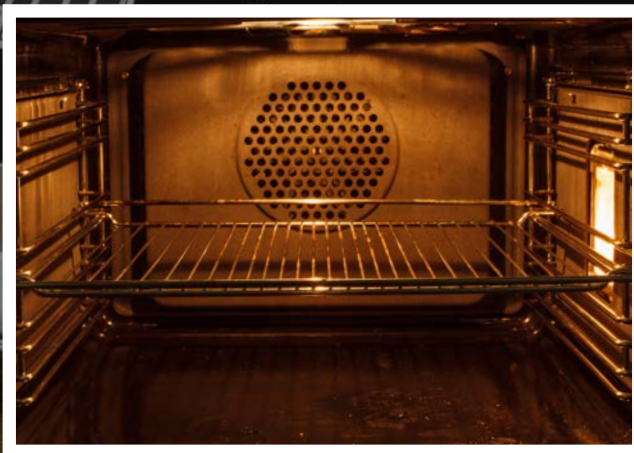
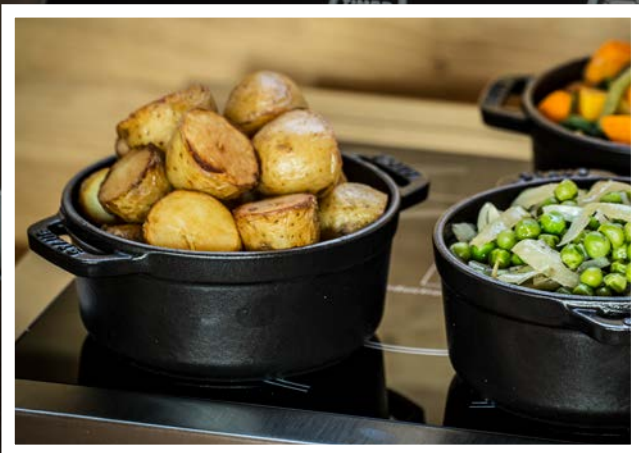




CHEFMASTER





Chefmaster is a comprehensive range of kitchen appliances at highly competitive prices. From microwaves and contact grills to blenders and fryers, Chefmaster products are designed to maximise efficiency to food service and meet the needs of a demanding kitchen. In addition, Chefmaster products come with a 2-year warranty to give you that extra peace of mind. So you can be sure of Chefmaster's durability, performance and all this at an outstanding value for money.

TOASTERS

4 & 6 Slot Toasters

- Stainless steel finish
- Variable timer
- Removable crumb tray
- Variable slot selection
2 or 4 slots for HEA895
2, 4 or 6 slots for HEA896
- Manual lift mechanism
- Maximum bread size: 130 x 130 x 20mm



01



02

Conveyor Toaster

A conveyor toaster which combines both performance and superb value. Capable of up to 300 slices per hour. Simple and straightforward controls allow you to adjust the toasting speed and temperature for perfectly cooked toast.

- Double slot feed model
- Up to 300 slices per hour
- Maximum bread thickness 80mm
- Easy to load rack, with front or rear discharge
- Four position toast selector, including power save mode for quieter periods
- Includes blanking plate for control panel



03

01 HEA895 4 Slot Toaster - 300 x 250 x 215mm
02 HEA896 6 Slot Toaster - 400 x 250 x 215mm
AC8930 Spare Element

03 HE5071 Conveyor Toaster - 368 x 418 x 387mm
AC0900 Spare Lower Element
AC0901 Spare Upper Element



WAFFLE MAKER

Waffle Maker

- Stainless steel body
- Cast-iron plates
- Makes rectangle 4 x 6 square pattern waffles
- Adjustable temperature 50°C to 300°C
- Drip tray to the rear
- Fork included



HEB081 Waffle Maker - 461 x 322 x 222mm



2
YEAR
WARRANTY

CRÊPE MAKER

Crêpe Maker

- 400mm diameter cast-iron baking plate with non-stick coating
- Stainless steel housing
- Temperature range from 30°C to 300°C
- Built-in storage drawer
- Wooden spreader included



HEF572 Crêpe Maker - 450 x 510 x 240mm



2
YEAR
WARRANTY

CONTACT GRILLS

Contact Grills

These contact grills are available in 3 sizes and with a choice of various flat/ribbed plate options as detailed below.

- Robust, cast-iron plates
- Adjustable sprung top plate to prevent food from being crushed
- Thermostatically controlled, temperature range 50°C to 300°C (2 independent controls on double grill)
- Includes cleaning brush (excluding HEA788 & HEA790)



Ribbed Plate



Flat Plate



HEA750



HEA751

Small Single Grill

- Power: 1.8kw, 13 amp plug
- Grilling area: 218 x 230mm
- Dimension: 290 x 305 x 210mm

Large (Panini) Single Grills

- Power: 2.2kw, 13 amp plug
- Grilling area: 340 x 230mm
- Dimension: 410 x 305 x 210mm

Double Grills

- Power: 2 x 1.8kw, 2 x 13 amp plugs
- Grilling area: 475 x 230mm
- Dimension: 570 x 305 x 210mm

Small Single Grill

HEA773 Ribbed top/ribbed bottom plates

Large (Panini) Single Grills

HEA750 Ribbed top/flat bottom plates
 HEA788 Flat top/flat bottom plates, no cleaning brush supplied
 HEA787 Ribbed top/ribbed bottom plates

Double Grills

HEA751 Ribbed top/flat bottom plates
 HEA790 Flat top/flat bottom plates, no cleaning brush supplied
 HEA789 Ribbed top/ribbed bottom plates



GRIDDLES

Standard Width Griddle

- Flat steel griddle plate designed to ensure even heat distribution
- Front grease drawer
- Thermostatically controlled
- Temperature range 50°C to 300°C
- Cooking surface 550 x 350mm



01

Extra Wide Griddle

- Flat steel griddle plate designed to ensure even heat distribution
- Dual temperature zones with individual controls
- Front grease drawer
- Thermostatically controlled
- Temperature range 50°C to 300°C
- Cooking surface 728 x 400mm



02

01 HEA754 Standard Width Griddle - 550 x 430 x 240mm

02 HEF573 Extra Wide Griddle - 730 x 530 x 230mm



BAIN-MARIES

1/1 GN Compatible Bain-Maries

A range of wet heat bain-maries, perfect for keeping pre-cooked food products ready to serve.

- Accepts GN containers up to 150mm deep
- Wet heat only application
- Includes “boil dry” safety cut out switch
- Models available with or without drain off tap and with or without containers
- Models with containers are supplied with 2 x 1/3 GN's, 2 x 1/6 GN's, Lids and adaptive bars



HEF575



HEA758



HEF576



HEF577

HEF575 1/1 GN Bain-Marie
- 355 x 555 x 255mm

HEA758 1/1 GN Bain-Marie c/w drain off tap
- 355 x 555 x 255mm

HEF576 1/1 GN Bain-Marie c/w containers
- 355 x 555 x 255mm

HEF577 1/1 GN Bain-Marie c/w drain off tap & containers
- 355 x 555 x 255mm



2
YEAR
WARRANTY

BARBECUE - FOLDING

Folding Barbecue

- Piezo ignition
- Stand mounted on wheels
- Stainless steel body/foldable chrome plated legs
- Supplied with gas hose & connection
- LPG operated - 5kg or 11kg bottle
- Total grilling area 870mm x 290mm
- For outdoor use only



HE1281 Folding Barbecue - 1120 x 420 x 900mm



2
YEAR
WARRANTY

FRYERS - COUNTERTOP

Countertop Electric Fryers

- Stainless steel construction with stainless steel lids
- Thermostatic control with safety cut-out switch
- Max temperature 190°C
- Non-slip rubber feet



01

4 Ltr Single Basket Model

- Single tank/single basket
- Up to 4.2kg (9.3lbs) frozen chips per hour
- Up to 4.8kg (10.8lbs) non-frozen chips per hour
- Power 2kw



02

6 Ltr Single Basket Model

- Single tank/single basket
- Up to 6.4kg (14lbs) frozen chips per hour
- Up to 7.2kg (16lbs) non-frozen chips per hour
- Power 2.5kw



03

2 x 6 Ltr Twin Tank Model

- Twin tanks/single basket per tank
- Up to 2 x 6.4kg (2 x 14lbs) frozen chips per hour
- Up to 2 x 7.2kg (2 x 16lbs) non-frozen chips per hour
- Power: 2 x 2.5kw, 2 x 13 amp plugs

- 01 HED242 4 Ltr Single Basket Model - 217 x 400 x 320mm
- 02 HEA752 6 Ltr Single Basket Model - 265 x 430 x 295mm
- 03 HEA753 2 x 6 Ltr Twin Tank Model - 550 x 430 x 295mm



PIZZA OVEN

Single Deck Pizza Oven

- Stainless steel construction
- Stone baking deck
- Air vent with shutter
- Capacity 2 x 220mm (8¾") pizzas
- Power: 1.6kw



HEB070 Single Deck Pizza Oven - 580 x 490 x 245mm



2
YEAR
WARRANTY

INDUCTION HOBS

3kw Single Zone

- Stainless steel body with black glass ceramic top
- 10 power settings
- Temperature range 60°C - 240°C
- Touch control panel & LED display
- 180 minutes timer
- Suitable for pan sizes 12 - 26cm



01

2kw Single Zone

- Plastic body with black glass top
- 10 power settings
- Temperature range 60°C - 240°C
- Touch control panel & LED display
- 180 minute timer
- Suitable for pan sizes 12 - 26cm



02

3kw Double Zone

- Plastic body with black glass top
- 10 power settings
- Temperature:
Left hand side 60°C - 240°C,
500-1800w
Right hand side 60°C-240°C,
500-1300w
- Touch control panel & LED display
- 180 minute timer
- Suitable for pan sizes 12 - 24cm



03

01 HEA774 3kw Single Zone - 340 x 445 x 120mm

02 HEA516 2kw Single Zone - 291 x 355 x 65mm

03 HEA517 3kw Double Zone - 605 x 360 x 66mm



CONVECTION OVENS

Compact Convection Oven

- Compact 30 litre oven 405 x 255 x 300mm
- Temp 50°C – 250°C
- 120 minute timer
- Stainless steel construction
- Drop down door
- Supplied with 3 grid shelves
- Aluminium drip tray
- Power 2.5kw



4 Shelf Convection Oven with Grill

This high-powered oven offers the flexibility of pre-heat, convection, grill and steam functionality.

- Stainless steel finish, easy to clean
- Digital touchscreen panel
- Built in humidifier, offering steam function
- Internal grill function
- Cook & Hold facility
- Fan assisted oven with easy-to-use icon-driven menu selections
- Offers multi-stage programmable options & manual cooking
- 4 Shelves positions (4 aluminium trays included)
- 99 Minute timer
- Internal light
- Drop down door with cool touch handle



CLEARANCE

01

02

01 HEC820 Compact Convection Oven - 530 x 450 x 315mm

02 HEC819 Large Convection Oven - 595 x 595 x 570mm



2
YEAR
WARRANTY

MICROWAVES

1000 Watt Microwave

- Stainless steel interior & exterior
- 25 Ltr cavity
- Touch controls
- 100 programmes
- 3 cooking stages
- 2 x multiple quantity setting
- 10 power levels
- Up to 60 minute timer
- Internal dimensions 327 x 346 x 200mm



01

1800 Watt Heavy Duty Microwave

- Stainless steel interior/exterior
- 34 Ltr cavity
- Touch controls
- 100 programmable options/10 power levels
- 3 Stage cooking
- 2x quantity cooking function
- Internal light
- Internal dimensions 360 x 408 x 224mm



02

01 HEB082 1000 Watt Microwave - 511 x 432 x 311mm

02 HEB643 1800 Watt Heavy Duty Microwave - 575 x 529 x 368mm



2
YEAR
WARRANTY

SLICERS

Medium Duty Slicers

These medium duty slicers are capable of delivering high volume performance at an exceptional value for money price and are ideal for restaurants, cafés, coffee shops and bars.

- Aluminium housing
- 0-12mm slice adjustment for precision slicing
- Built-in blade sharpener
- Safety locking system



HEC821 Medium Duty Slicer - 220mm Blade - 470 x 450 x 345mm

HEA759 Medium Duty Slicer - 250mm Blade - 510 x 445 x 385mm

HEB084 Medium Duty Slicer - 300mm Blade - 630 x 530 x 470mm



2
YEAR
WARRANTY

MIXERS - TABLETOP

5.5Ltr Table Top Mixer

An attractive, versatile and powerful table top mixer with a metal housing and easy to use dial controls.

- 5.5 Ltr stainless steel bowl
- Aluminium housing
- Powerful 1500 watt motor
- 6 speed dial including pulse function
- Supplied with flat beater, dough hook and balloon whisk
- Lift up head for easy tool change and bowl removal
- Safety cut-out when head is raised

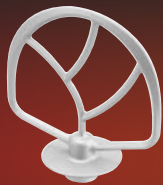
ACCESSORIES INCLUDED

WHISK



02

BEATER



03

DOUGH HOOK



04



01

7Ltr Table Top Mixer

Ideal for smaller batches. Perfect for mixing, pastry & preparation of sauces.

- Complete with 7 litre stainless steel bowl, beater, dough hook & wire whisk
- Easy to use bowl lift provides easy access for cleaning
- Includes safety micro switch
- Grey metal construction



05

01 **HEA520** Table Top Mixer 5.5 Litre - 410 x 320 x 400mm

02 **AC9778** Spare whisk

03 **AC9779** Spare beater

04 **AC9780** Spare dough hook

05 **HEF574** Table Top Mixer 7 Litre - 236 x 403 x 438mm



2
YEAR
WARRANTY

MIXERS - HEAVY DUTY

Heavy Duty Mixers

A range of reliable & robust heavy duty mixers, perfect for all environments.

- All supplied with beater, dough hook & whisk
- Aluminium body
- Easy to use on/off buttons
- 3 speed gear box
- Safety guard with micro switch
- HEB633 & HEB634 should be sited on a low height mixer table (HEF655)



ACCESSORIES INCLUDED

DOUGH HOOK



BEATER



WHISK



HEB632 10 Ltr Capacity Model Heavy Duty Mixer - 370 x 460 x 620mm

HEB633 20 Ltr Capacity Model Heavy Duty Mixer - 505 x 555 x 764mm

HEB634 30 Ltr Capacity Model Heavy Duty Mixer - 584 x 617 x 1136mm

HEB655 Low Height Mixer Table - 600 x 600 x 550mm



2
YEAR
WARRANTY

STICK BLENDERS

Light Duty Stick Blender

- 800watt motor
- A simple to use power control button, the harder you press, the faster it goes
- Removable shaft for easy cleaning
- Stainless steel shaft & blades
- Variable speed up to 13,000 rpm
- 160mm Shaft



01



WHEN ORDERING
SELECT MOTOR &
LENGTH OF SHAFT



02

Heavy Duty Stick Blender

3 inter-changeable shafts and a double whisk available (sold separately).

- High quality plastic handle
- Stainless steel shafts available in 3 lengths, 370mm, 450mm & 530mm
- Double whisk attachment also available
- Variable speed 3,000 - 12,000 rpm
- Powerful 750 watt motor
- Capacity from 50 - 100 Ltr

BLENDER SHAFTS (3 LENGTHS AVAILABLE) & WHISK
TO BE ORDERED SEPARATELY

370mm



03

450mm



04

530mm



05

Whisk



06

- 01 **HEB642** Light Duty Stick Blender
- 02 **HEA505** Heavy Duty Stick Blender Motor (Shaft & whisk not included)
- 03 **OE9766** 370mm Shaft For Heavy Duty Stick Blender (Up to 50Ltr capacity)

- 04 **OE9767** 370mm Shaft For Heavy Duty Stick Blender (Up to 75Ltr capacity)
- 05 **OE9768** 530mm Shaft For Heavy Duty Stick Blender (Up to 100Ltr capacity)
- 06 **OE9769** Whisk Attachment For Heavy Duty Stick Blender



VEGETABLE PREPARATION MACHINE

Vegetable Preparation Machine

The 550 watt highly efficient motor is designed for cutting large quantities of vegetables. An excellent cut is guaranteed due to the high quality discs. Equipped with a large and small inlet on top, ideal for most vegetables.

- Suitable for slicing, dicing, shredding and grating
- Die cast aluminium body
- Small and large hoppers
- **No Discs** included as standard



Large Chopping Blade



Feed Tube & Chopping Blade



Feed Tube

Preparation Machine (no discs)

02 HEF606 Vegetable Preparation Machine - 622 x 247 x 507mm



Cutting Discs • Stainless Steel

AC9872 2mm Slicing Blade

AC9871 4mm Slicing Blade

ACA433 8mm Slicing Blade

ACA432 10mm Slicing Blade

AC9870 3mm Grating Blade

AC9869 4mm Grating Blade

AC9868 7mm Grating Blade

ACA434 4mm x 4mm Julienne Blade

ACA435* 8mm x 8mm Dicing Grid

ACA436** 10mm x 10mm Dicing Grid

ACA437* 8mm French Fry Blade

ACA438** 10mm French Fry Blade

*Note ACA435/ACA437 require ACA433 8mm Slicing Disc to operate
 **Note ACA436/ACA438 require ACA432 10mm Slicing Disc to operate

INSECT CONTROL UNITS & FLY SCREEN

Insect Control Units

A range of models, suitable for all commercial kitchens. Encased in a metal frame, with a catchment tray. Uses energy efficient bulbs.

- High efficiency UV fluorescent bulb
- Can be wall mounted or ceiling suspended
- Easy to operate on/off switch
- Large and simple to remove insect collection tray
- Replacement bulb - order AC9709



01



02



03

Glue Board Insect Control Unit

Stylish wall mountable fly killer traps insects discreetly. High quality UV with a coverage of 50m².

- High efficiency UV-A tube
- ABS fireproof plastic housing
- 50m² coverage
- Glue board (replace once a month) - order ACA275
- Replacement bulb - order ACA274



04

Fly Screen

Provides an effective barrier, preventing insects from entering food premises.

- Easy clean aluminium
- Attractive silver finish
- Fits doors up to 1000mm x 2000mm
- Can be cut to size required



05

01	HEA780	50m ² Coverage 1 x 11 watt UV fluorescent bulb - 340 x 100 x 265mm
02	HEA782	100m ² Coverage 2 x 11 watt UV fluorescent bulb - 335 x 100 x 265mm
03	HEA784	150m ² Coverage 3 x 11 watt UV fluorescent bulb - 490 x 100 x 265mm

04	HEF217	Glue Board Insect Control Unit - 375 x 140 x 196mm
05	HEA786	Fly Screen - 1000 x 2000mm



CARVING KNIFE - ELECTRIC

Electric Carving Knife

Professional electric carving knife.

- Single speed
- Once located in motor unit, blade length 190mm (from tip to guard), 170mm of which is serrated
- 2 metre cable
- 95 watt motor



HEA841 Electric Carving Knife



2
YEAR
WARRANTY

SOUP KETTLES

6 Litre Soup Kettles

- Choice of black metallic or mirror polished stainless steel finish
- 6 litre capacity
- Wet heat operation
- Temperature range 30°C to 95°C
- Removable inner container for easy cleaning
- Hinged, removable stainless steel lid with ladle cut out



01

02

10 Litre Soup Kettles

- Cauldron style self service unit
- Choice of black metallic or mirror polished stainless steel finish
- 10 litre capacity
- Wet heat operation
- Re-heated operation - adjustable simmerstat
- Removable inner container for easy cleaning
- Hinged stainless steel lid



03

04



01 HEA776 6 Litre Soup Kettle - 280 dia x 370mm - Black Finish
02 HEA777 6 Litre Soup Kettle - 280 dia x 370mm - Stainless Steel Finish

03 HED233 10 Litre Soup Kettle - 345 dia x 349mm - Black Finish
04 HED232 10 Litre Soup Kettle - 345 dia x 349mm - Stainless Steel Finish



2
YEAR
WARRANTY

PIE CABINETS

Pie Cabinets

- Stainless steel construction with toughened glass
- Sliding glass doors to rear and fixed glass panel to front
- Variable temperature control 30°C – 90°C
- Visible temperature display
- Removable crumb tray
- Supplied with removable shelves - 4 for HEC823, 5 for HEC824



01

02



01 HEC823 Pie Cabinet - 640 x 360 x 530mm

02 HEC824 Pie Cabinet - 865 x 360 x 625mm



2
YEAR
WARRANTY

RICE COOKER & RICE WARMER

5.4 Litre Rice Cooker / Warmer

- 5.4 Ltr capacity – Holds up to 14 Ltr cooked rice
- Auto keep warm after cooking has finished
- Removable non-stick inner for easy cleaning
- Supplied with measuring cup & spatula



01

01 HEB640 5.4 Litre Rice Cooker - 480 dia x 335mm

20 Litre Rice Warmer

- 20 Ltr capacity
- Warmer function only
- Removable non-stick liner for easy cleaning
- Includes spatula



02

02 HEB641 20 Litre Rice Warmer - 480 dia x 385mm

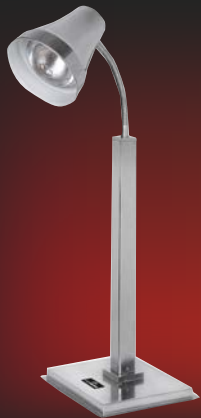


2
YEAR
WARRANTY

WARMING LAMPS

Warming Lamps

- Choice of Single or Double
- Adjustable heads for easy movement
- Independent on/off switch for each head
- Power 250watt per bulb
- Spare bulb OEA147



01

Stainless steel
base



02

Stainless steel
base



03

Marble
base

Food Warmer

- Lightweight aluminium frame for ease of movement
- 2 x 275w bulbs which provide heat & light
- Simply on/off toggle switch
- Accepts 1/1 GN pans
- Spare bulb AC8920



04



- 01 HED492 Warming Lamp - 290 x 250 x 700mm
- 02 HED493 Warming Lamp - 380 x 250 x 700mm
- 03 HED494 Warming Lamp - 400 x 270 x 700mm

- 04 HEA887 Food Warmer - 490 x 355 x 610mm

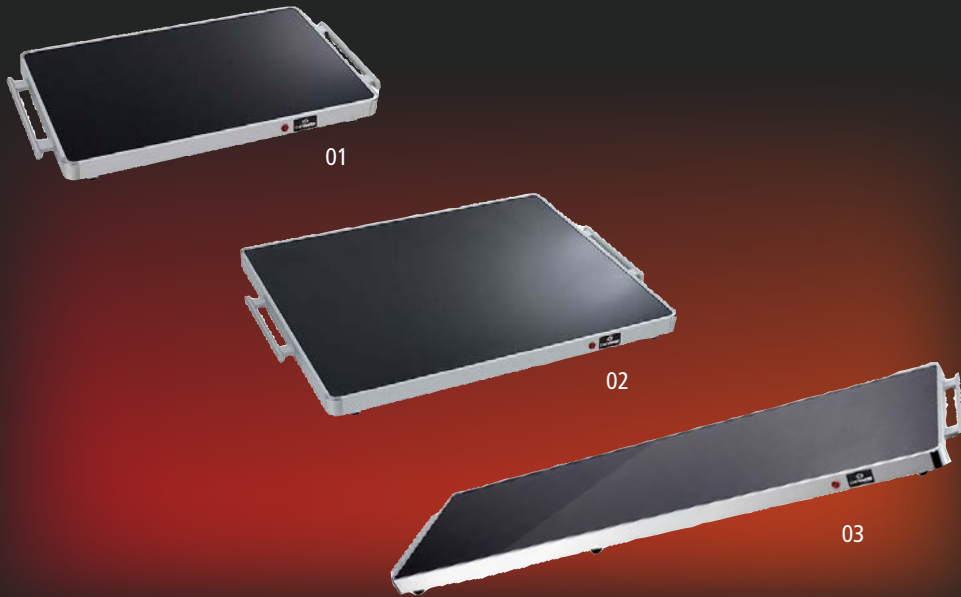


2
YEAR
WARRANTY

HEATED DISPLAY BASES

Heated Display Bases

- Aluminium frame with tempered black glass
- Adjustable temperature up to 95°C



- 01 HEA794 Heated Display Base - 570 x 305 x 40mm
- 02 HEA795 Heated Display Base - 670 x 505 x 40mm
- 03 HEA796 Heated Display Base - 1070 x 330 x 40mm

Heated Display Unit

- Stainless steel construction with heated black glass base
- Twin infrared bulbs for both heat and light (150watt)
- Adjustable temp 30°C – 85°C
- Independent controls for each side
- Accepts 2 x 1/1 GN pans



- 04 HED240 Heated Display Unit - 730 x 580 x 550mm



WATER BOILERS - MANUAL FILL

Manual Fill Water Boilers

Ideal for use in locations with no plumbed water.

- Thermostatic control with automatic cut-off
- Polished stainless steel body
- 'Water ready' indicator light
- Illuminated 'power-on' switch
- Auto reset and boil dry protection



- | | | |
|----|--------|---|
| 01 | HEA755 | Manual Fill Boiler 10 Litre Model - 210 dia x 475mm |
| 02 | HEA756 | Manual Fill Boiler 20 Litre Model - 268 dia x 600mm |
| 03 | HEA757 | Manual Fill Boiler 30 Litre Model - 385 dia x 500mm |

2
YEAR
WARRANTY

WATER BOILER - AUTO FILL

28 Litre Hourly Output Autofill Countertop Water Boiler

The Chefmaster autofill water boiler provides a high capacity 28 litre output, combined with a rapid 8 litres of boiling water available for immediate draw-off.

- Stainless steel outer casing
- 8 Litre draw-off/28 Litre output per hour
- Advanced LED temperature display
- Variable temperature setting - adjust between 60°C and 97°C as required
- Indicates when filter cartridge needs replacing. Supplied with 1 x filter cartridge
- Tap height position 240mm from drip tray - allows filling of larger vessels
- Insulated tank - ensuring lower energy consumption
- Removable drip tray



LED Temperature Display



Inbuilt Easy Change Water Filter



240mm Tap height for filling of larger vessels

HEF605 Automatic Water Boiler 28 Litre - 200 x 436 x 589mm

OEA313 Replacement filter cartridge



2
YEAR
WARRANTY

COFFEE PERCOLATOR

15 Litre Capacity Coffee Percolator

Stainless steel coffee percolator, with double-wall to help retain temperature and lower energy consumption.

- Built-in filter for coarsely ground coffee
- Easy to read glass water level gauge
- Descaling indicator
- Welded stainless steel handles with silicone grip
- Removable drip tray with stainless steel grid



HEF571 Coffee Percolator 15 Litre Capacity - 386 x 393 x 641mm



2
YEAR
WARRANTY

COFFEE MACHINES

1.8 Ltr Filter Coffee Machine

- 2 individually switched hotplates
- Supplied with a 1.8 Ltr shatterproof jug
- Brewing time approx. 7 minutes/1 jug
- Output approx. 16 Ltr per hour
- Robust stainless steel construction
- Manual fill
- Capacity: 1.8 Ltr/7min, 16 Ltr/hr

2.0 Ltr Filter Coffee Machine

- Brews fresh coffee direct into a flask
- Supplied with a stainless steel double wall 2.0 Ltr vacuum jug
- Brewing time approx. 8 minute/1 jug
- Output approx. 15 Ltr per hour
- Manual fill
- Capacity: 2.0Ltr/8min, 15 Ltr/hr



Coffee Jug Hotplates

- 2 individually switched 130mm dia Hotplates



01 HEB085 1.8 Ltr Filter Coffee Machine - 215 x 410 x 460mm

02 HEB086 2.0 Ltr Filter Coffee Machine - 210 x 410 x 520mm

03 HEB087 Coffee Jug Hotplates - 355 x 180 x 70mm



2
YEAR
WARRANTY

BLENDERS - BAR

2 Ltr Blenders

- Available in electronic & manual options
- 2 Ltr polycarbonate jug included
- Powerful 2.2kw motor
- Variable speed up to 27,000 rpm
- Pulse button



01



02

1.5Ltr Blender with Sound Enclosure

- 1.5ltr Polycarbonate jug included
- Digital controller
- Powerful 2.2kw motor
- 4 speed settings:
15,000 / 20,000 / 25,000 / 30,000 rpm
- Pulse button



03

01 HEC825 2 Ltr Blender with Electronic Controls - 230 x 254 x 492mm

02 HEC826 2 Ltr Blender with Manual Controls - 252 x 255 x 520mm

03 HED244 1.5Ltr Blender with Sound Enclosure - 230 x 254 x 492mm



2
YEAR
WARRANTY

JUICER - AUTOMATIC

Automatic Juicer

- Perfect for making batches of fruit and vegetable juice
- Powerful 700 watt motor
- 3000 rpm speed for consistent juicing
- 80mm wide chute
- 7.5 Ltr pulp container



HEA873 Automatic Juicer - 257 x 473 x 522mm



2
YEAR
WARRANTY

AIR POTS & BEVERAGE JUGS

Pump Air Pots

Plain Models

Easy-to-use, one hand push button pump dispenser with unbreakable stainless steel interior and exterior, safety lock and leakage protection spout.



Pump Air Pots

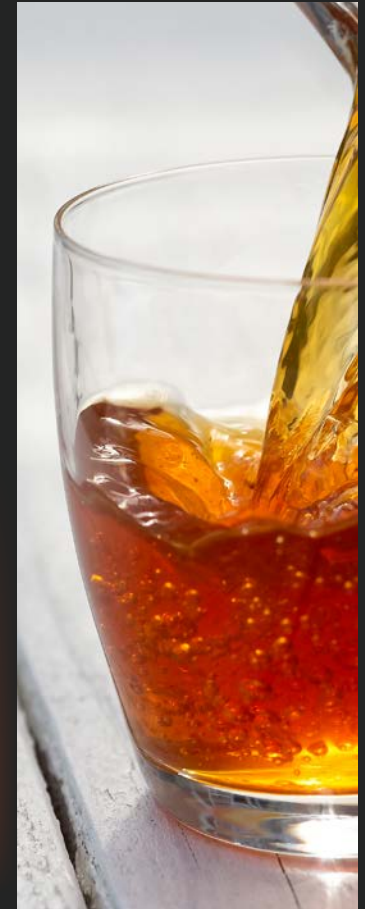
Inscribed Models

A choice of 3 indelible inscriptions, COFFEE, TEA and HOT WATER, to eliminate taste contamination.



Lever Air Pots

Easy serving lever type pump dispensers with removable lids and wide neck for easy cleaning.



- 01 **DM265** 1.9 Litre Pump Air Pot - Plain
- 02 **DF140** 2.5 Litre Pump Air Pot - Plain
- 03 **DF141** 3 Litre Pump Air Pot - Plain
- 04 **DF142** 5 Litre Pump Air Pot - Plain

- 05 **DF143** 3 Litre Pump Air Pot - Tea
- 06 **DF144** 3 Litre Pump Air Pot - Coffee
- 07 **DM266** 3 Litre Pump Air Pot - Decaf
- 08 **DF145** 3 Litre Pump Air Pot - Hot Water

- 09 **DF137** 2.5 Litre Lever Air Pot - Plain
- 09 **DF138** 3 Litre Lever Air Pot - Plain
- 09 **DF139** 4 Litre Lever Air Pot - Plain



AIR POTS & BEVERAGE JUGS

Inscribed Beverage Jug

Unbreakable stainless steel lined jugs with easy-to-use lever pour action.



01

Vacuum Beverage Jugs

Unbreakable stainless steel inner lining keeps drinks hot or cold for hours.

- Thumb release mechanism

NEW



02



03



04

CLEARANCE

- 01 **DF153** 1.5 Litre Inscribed Beverage Jug - Hot Water
- 02 **DM259** 1 Litre Vacuum Beverage Jug - Plain
- 03 **DF149** 1.5 Litre Vacuum Beverage Jug - Plain
- 04 **DF148** 2 Litre Vacuum Beverage Jug - Plain

Inscribed Vacuum Jugs

Designed to keep beverages at the desired temperature, ideal for serving beverages throughout your service times. Double walled insulated construction.

- Thumb release mechanism

NEW



05

06

07

08

09

- 05 **DM260** 1 Litre Inscribed Vacuum Jug - Milk
- 06 **DM261** 1.5 Litre Inscribed Vacuum Jug - Tea
- 07 **DM262** 1.5 Litre Inscribed Vacuum Jug - Coffee
- 08 **DM263** 1.5 Litre Inscribed Vacuum Jug - Decaf
- 09 **DM264** 1.5 Litre Inscribed Vacuum Jug - Hot water



AIR POTS & BEVERAGE JUGS

Deluxe Vacuum Jugs

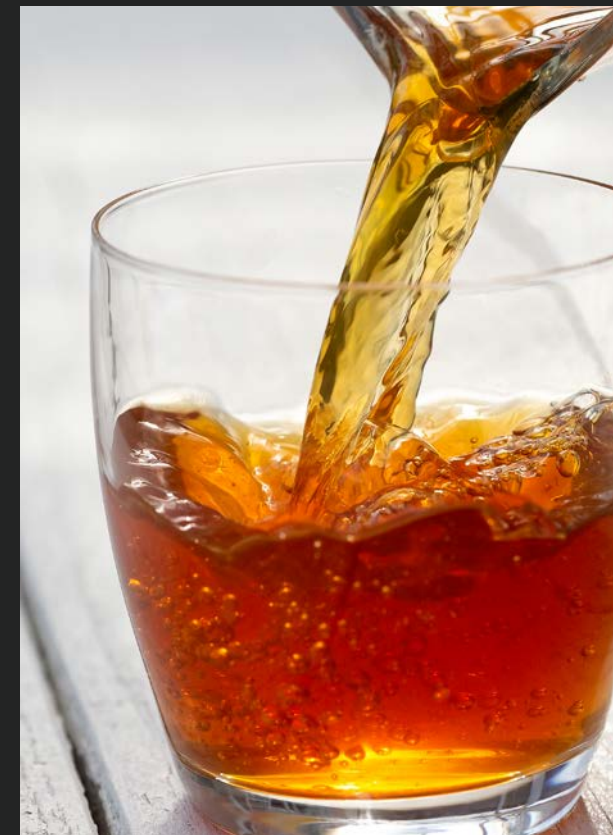
Brushed stainless steel jug with contrasting mirror finish lid and handle. Flip-top lid for steady, spill-free pouring.



Vacuum Beverage Jugs

Constructed inside and out from stainless steel giving excellent thermal retention. Black ABS handle, neck & lid.

- Removable screw top lid with pouring lever



- 01 **DF146** 1 Litre Deluxe Vacuum Jug - Plain
- 01 **DF147** 2 Litre Deluxe Vacuum Jug - Plain
- 02 **DK484** 1 Litre Deluxe Vacuum Jug - Tea
- 03 **DK485** 1 Litre Deluxe Vacuum Jug - Coffee
- 04 **DK486** 1 Litre Deluxe Vacuum Jug - Hot Water

- D4067** 1 Litre Vacuum Beverage Jug - Plain
- D4068** 1.5 Litre Vacuum Beverage Jug - Plain
- D4069** 2 Litre Vacuum Beverage Jug - Plain





CHEFMASTER

For more information call 0330 0585 700 or e-mail sales@factory1st.co.uk

Head Office: Factory1st, Brunel Road, Theale, Berkshire, RG7 4XE.

Terms & Conditions: All prices are strictly nett and excluding VAT. All specifications and prices detailed are correct at the time of going to press, errors and omissions excepted, but are subject to alteration by us without prior notice. A copy of our full terms & conditions is available on request.